

# DEPTH

with Adobe® Photoshop®

## Step 1

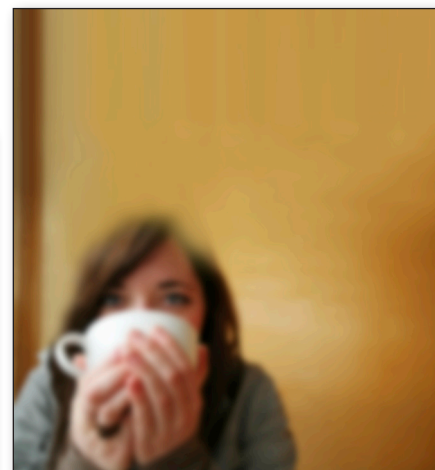
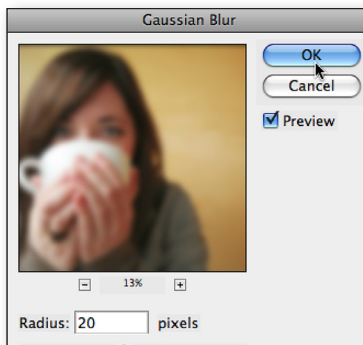
- » Open the photo you want to work with and duplicate it in a new layer (Cmd/Ctrl + J or right-click and choose Duplicate Layer).

## Step 2

- » Select the area you want to create as the foreground.  
*There are numerous ways to select a portion of a photo. The newest in Photoshop CS3 is the Quick Selection Tool (located under the Magic Wand Tool).*
- » Duplicate your selection in a new layer (Cmd/Ctrl + J or right-click and choose Layer Via Copy).

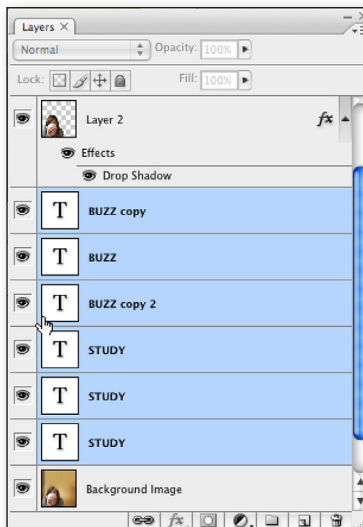
## Step 3

- » Select the layer with the original image and blur it to create a sense of depth of field.
- » From the Filters menu, choose Blur and then Gaussian Blur. Play with the slider until you like the degree of blurriness. Click OK.  
*I needed to turn off the newly created selection layer so I could get a better sense of the blur effect. When finished with the blur I turned that layer back on.*



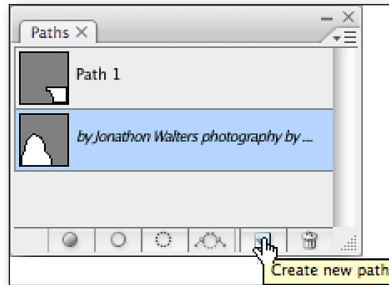
## Step 4

- » Add new type layers by selecting the Type tool and clicking on your image. **Be sure all of your type layers are located between the selection layer that is not blurred and the background image that is blurred.**  
*I layered several variations of the words and moved them slightly out of alignment to create a feeling of jitters from the coffee buzz.*



# Step 5

- » Add additional layers of type above the non-blurred selection layer. I created a lead-in by making the first few words a larger font and changing the color of the text.
- » The irregular shape of the text and the curved by-lines were created by using paths. Open the Paths panel and create a new path by clicking on the Create New Path icon at the bottom of the panel or from the contextual menu.
- » Then create any shape you want by using the Pen tool, the Freeform Pen tool, the Shapes tools or a combination of all of these. You can now place text inside this path or have text follow the outline of the path for curved text.



# Step 6

- » Fine tune the image by adding a drop shadow on the foreground image to help smooth the transition with the type and background.
- » Select the foreground layer and double-click to the right of the layer's name or click the Add a Layer Effect icon at the bottom of the Layers panel.
- » Choose Drop Shadow and play with the opacity, distance and size settings, as well as the color.

